

# CONSTRUCTION SPECIFICATIONS: FRAMELESS

## Frameless Construction

### 1 Box Construction

5/8" thick industrial grade particleboard. Front face of cabinet is edgebanded with PVC in color matching the door. Nailers, stretchers and toe kicks have a 2-dowel application.

### 2 End Panels

5/8" thick industrial grade particleboard. Exterior panels faced with laminate matching the color of doors and drawer fronts. End panels are bore and dowel with glue joinery. End panels are not textured.

**Standard Interior:** light maple laminate    **Optional Interior:** white laminate

### 3 Top/Bottom Panels

5/8" thick industrial grade particleboard. Exposed exterior panels faced with laminate matching the color of doors and drawer fronts. Interior surfaces faced with laminate matching case interior.

### 4 Hanging Rails

5/8" thick x 4 3/8" high particleboard. Hanging rails run the full width of the cabinet. Multiple hanging rails may be included depending on cabinet height/configuration.

### 5 Back Panel

1/8" thick fully captured back panel is dadoed and glued to maintain squareness and structural rigidity. Interior surfaces match case interior.

### 6 Shelves

5/8" thick particleboard with laminate on both sides; includes matching edgeband for front face. Shelves are adjustable in wall and tall cabinets and fixed in base and vanity cabinets. Wall, base and vanity cabinets receive 10 1/2" deep shelves; tall cabinets receive 22 1/2" deep shelves. Cabinets 27" wide and greater receive a center stile for additional shelf support.

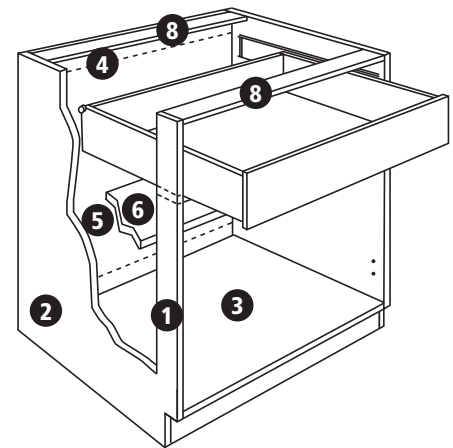
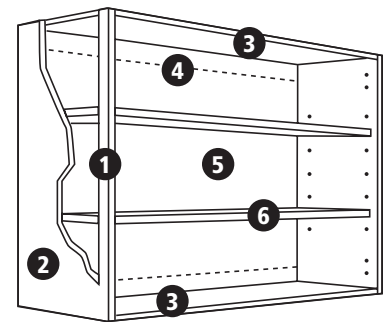
### 7 Toe Kick

5/8" thick x 4 1/2" high industrial grade particleboard captured between end panels. Toe kick is recessed 4".

### 8 Cross Support Stretchers

5/8" thick x 4 3/8" deep running the width of most base and vanity base cabinets, with matching edgeband for front face. Additional stretcher positioned beneath drawers for standard base and vanity base cabinets only.

NOTE: All standard sink base and vanity sinks base cabinets come with high impact injection molded plastic corner braces.



## Drawers

**Standard:** Nominal 1/2" (12mm) thick wood based composite panel front, back and sides with butt construction. Drawer bottoms are a nominal 1/8" (3mm) thick hardboard with light maple laminate; bottoms are inserted and glued into dado in front, back and sides.

### Drawer Guides

High-quality epoxy coated steel, Cushion-Tec™, side mounted guides, self-adjusting in mounting brackets. Built-in stop, self-closing and stay-closed features with a 100 lb. rated load capacity.

### White Metal Drawer (Upgrade)

German engineered, made in the USA, 3/4 extension drawer system. Integrated drawer slide and drawer side with white baked-on epoxy finish. Self-closing feature with 60mm closing range. Built-in drawer front bumpers. Load capacity of 100 lbs. Sides are 1/16" thick metal. Drawer bottoms and backs are 5/8" thick industrial grade particleboard faced with polyurethane-coated white laminate. Assembly construction is machined and pressed into sides for precision fitment.

### Dovetail Drawer (Upgrade only)

Front, back and sides are 5/8" (16mm) thick solid hardwood with dovetail construction. Drawer bottoms are nominal 1/4" (6mm) thick multi-ply hardwood plywood inserted into dado in front, back and sides. Includes high-quality steel, undermount soft-close drawer guides that help reduce drawer slamming. Self-adjusting in mounting brackets. Built-in stop, self-closing and stay closed features with a 75 lb rated load capacity.

### Hinges

**Standard:** Heavy-duty, high-quality steel, concealed 6-way adjustable hinge with self-closing feature.

**Upgrade:** Gentle-Touch (soft-close) hinge – heavy-duty, high-quality steel, concealed 6-way adjustable hinge with soft close resistance.

ARBOR | CREEK®  
C A B I N E T R Y

NOTICE: The product specifications appearing herein supersede and cancel all previous sheets, supplements and addenda, and represent current manufacturing standards and procedures. Arbor Creek Cabinetry reserves the right to make specification changes for continued product improvement.