

ARBOR | CREEK[®]

C A B I N E T R Y

Spring 2024



ARBOR | CREEK[®]

C A B I N E T R Y

Quality Cabinetry. Endless Appeal.

Born from decades of cabinet manufacturing experience, Arbor Creek offers quality construction and design appeal for large scale projects. From our framed and frameless offerings to our vast array of on-trend finishes, the Arbor Creek product line provides you options for any project concept, style, and budget.

The knowledgeable Arbor Creek sales and support teams bring the expertise and capabilities needed to help you tackle the challenges of even the most complex projects. Plus, with capabilities from coast to coast, we deliver the same great quality regardless of location.



Adley Frameless Thermofoil Laminate in Shiitake

COVER: Hammond 5-Piece Full Overlay Paint Grade in Alpine White and Baltic



Conroe Frameless Thermofoil Laminate in Grey Cashmere and Fashion Grey

The Freedom of Flexibility

Arbor Creek is pleased to offer partners the choice of both framed and frameless cabinet construction, because every project is unique.



FRAMED ➤

Adley Full Overlay Thermofoil Laminate in Hurricane

With a variety of door styles—including flat panel, raised panel, shaker-style, and slab—available in half or full overlay, our framed options can elevate designs from traditional to contemporary. Our framed product line features finishes in paint, stain, thermofused melamine, and thermofoil laminate.



FRAMELESS

Anderson Frameless Thermofused Melamine
in Farmhouse

When your project calls for a more contemporary design, consider the numerous frameless options from Arbor Creek. Pair flat panel, shaker-style, or slab options with paint, thermofused melamine, or thermofoil laminate finishes, to create looks that last at a variety of price points.



FRAMED



Framed Construction

1 FRONT FRAME

3/4" thick kiln dried hardwood: stiles and rails 1-1/2" wide, mullions 3" wide.

2 END PANELS

Nominal 1/2" (12mm) thick wood based composite panel with matching laminate exterior surfaces and natural maple laminate interiors. *Optional upgrade available.*

3 TOP/BOTTOM PANELS

Nominal 1/2" (12mm) thick wood based composite panel with natural maple laminate exterior and interior surfaces for wall cabinets and interior surface for base cabinets.

4 HANGING RAILS

Nominal 1/2" (12mm) thick x 4-1/2" wood based composite panel hanging rail running the full cabinet width at top for all cabinets; wall cabinets receive an additional hanging rail at the bottom.

5 BACK PANEL

Nominal 1/8" (3mm) thick hardboard with natural maple laminate interior surface.

6 SHELVES

Nominal 3/4" (18mm) thick wood based composite panel with natural maple laminate on both faces and matching edge band on front edge. Shelves are adjustable in all standard cabinets.

7 TOE KICK

Nominal 1/2" (12mm) thick unfinished wood based composite panel captured between end panels. Toe kick is 4-1/2" high and recessed 3-1/2".

8 DRAWERS

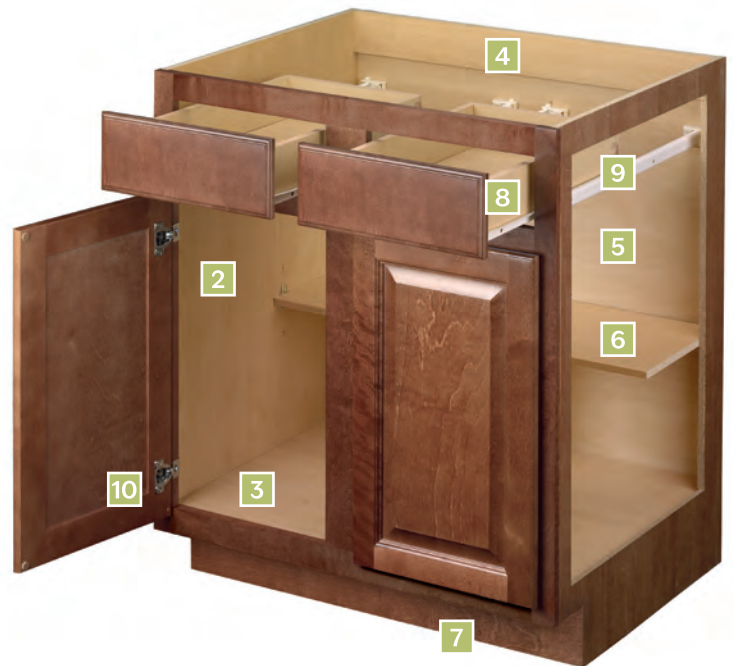
Nominal 5/8" (16mm) thick solid wood front, back, and sides with dovetail construction. Drawer bottoms are nominal 1/4" (6mm) thick multi-ply hardwood inserted and stapled into dado in front, back and sides.

9 DRAWER GUIDES

High-quality epoxy coated steel, self-adjusting in mounting brackets. Built-in stop, self-closing and stay-closed features with a 75 lb. rated load capacity. *Optional upgrade available.*

10 HINGES

Heavy-duty, high-quality steel, concealed 6-way adjustable hinge with self-closing feature. *Optional upgrade available.*



Additional Construction Options

ALLWOOD CONSTRUCTION

- Hardwood plywood shelves, end panels, back panel, and top/bottom panels.
- Available in all door styles and finishes.

ALLWOOD PLUS CONSTRUCTION

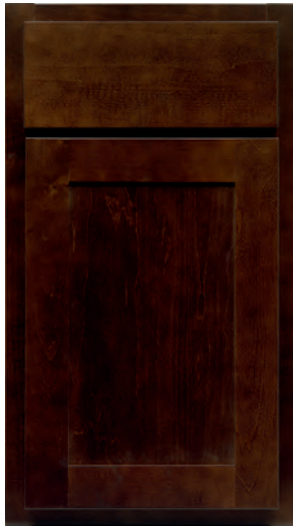
- Hardwood plywood shelves, end panels, and top/bottom panels.
- Nominal 1/4" (6mm) thick hardwood plywood back panel.
- Nominal 3/4" (18mm) thick ACQ* pressure treated toe board captured between end panels.
- Nominal 1/2" thick (12mm) x 2-7/8" wide plywood base Ibeam braces running full-depth front to back of cabinet.
- Available in maple and hardwood stained door styles only.

Framed Door Styles

Hardwood Door Styles

Arbor Creek hardwood doors offer versatility and quality for projects of any size and budget.

Hardwood doors feature 3/4" thick door frames and drawer fronts, 5-piece mortise and tenon joinery, and veneer center panels.



Roosevelt
Half Overlay

- Shaker door with 2-1/4" rails and stiles
- Slab drawer fronts



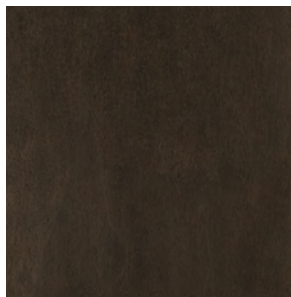
Selway
Half Overlay

- Flat panel door with 2-1/4" rails and stiles
- Slab drawer fronts

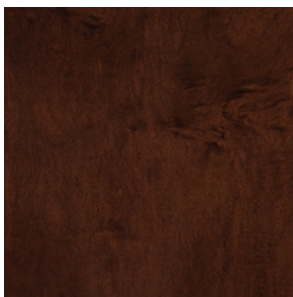
Hardwood Stain Finishes



Autumn Brown



Nuvoloso



Coffee



Luna



Roosevelt Half Overlay Hardwood in Luna

Framed Door Styles

Maple & Paint Grade Door Styles

With a broad variety of maple and paint grade door styles, enjoy flexibility in design and a wide array of options to elevate any space. All 5-piece doors feature 3/4" thick door frames and drawer fronts, 5-piece mortise and tenon joinery, and veneer center panels for stained products. Unless otherwise noted, the primary material for slab doors and 5-piece painted doors will be HDF.



Barrett

Half Overlay, Full Overlay

- Flat panel door with 2-3/4" rails and stiles
- Slab or 5-piece* drawer fronts



Hammond

Half Overlay, Full Overlay

- Shaker door with 3" rails and stiles
- Slab or 5-piece* drawer fronts



Holston

Half Overlay, Full Overlay

- Flat panel door with 2-1/4" rails and stiles
- Slab drawer fronts



Laurel

Full Overlay

- 5/8" thick doors and fronts
- Veneer edge banded door; HDF door for paint finishes
- Slab drawer fronts



Roosevelt

Half Overlay, Full Overlay

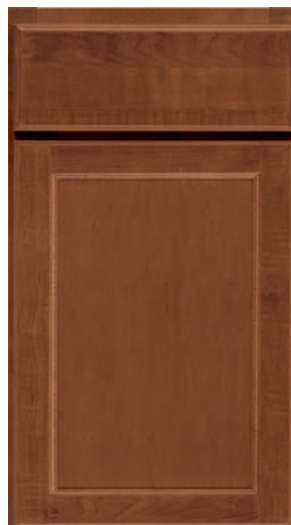
- Shaker door with 2-1/4" rails and stiles
- Slab or 5-piece* drawer fronts
- Painted doors use hardwood material for the rails and stiles



Sayers

Half Overlay, Full Overlay

- Raised panel door with 2-1/4" rails and stiles
- Slab drawer fronts
- Painted products use hardwood rails and stiles; center panel may be MDF or veneer



Selway

Half Overlay, Full Overlay

- Flat panel door with 2-1/4" rails and stiles
- Slab drawer fronts
- Painted products use hardwood rails and stiles; center panel may be MDF or veneer



Vernon

Half Overlay, Full Overlay

- 3/4" thick doors and fronts
- Solid door; hardwood door for paint finishes
- Slab drawer fronts

*Available on full overlay only

Framed Door Styles

Maple Stain Finishes



Crystal*



Silvergrass*



Toffee



Pecan



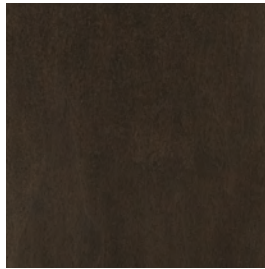
Storm



Autumn Brown



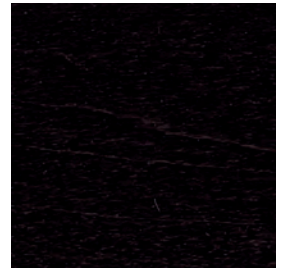
Graphite



Nuvoloso



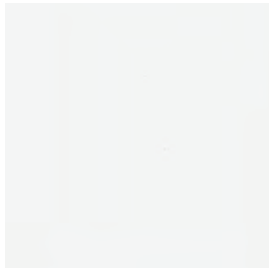
Coffee



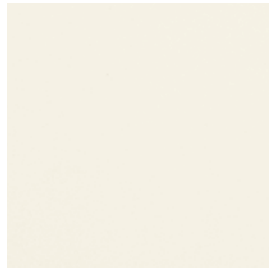
Luna

*Finish option not available on Vernon

Paint Finishes



Alpine White



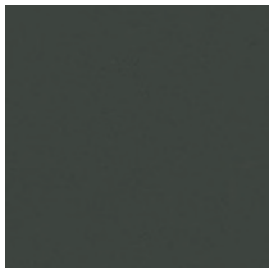
Linen



Dove Grey



Baltic



Hurricane



Framed Door Styles

Thermofoil Laminate & Thermofused Melamine Door Styles

Achieve modern and durable design with Arbor Creek thermofoil laminate and thermofused melamine doors styles.



Adley

Full Overlay

- 3/4" thick doors and fronts
- Routed shaker style with 2" rails and stiles
- Slab drawer fronts
- Doors are backed with white low pressure melamine



Conroe

Full Overlay

- 3/4" thick doors and fronts
- Slab door
- Slab drawer fronts
- Doors are backed with white low pressure melamine



Anderson

Half Overlay, Full Overlay

- 5/8" thick doors and fronts
- Thermofused melamine on front and back sides of doors
- Slab drawer fronts

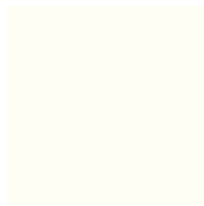
Thermofoil Laminate Finishes



Diva



Silvergrass



Exotic White

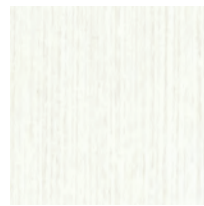


Grey Cloud



Hurricane

Thermofused Melamine Finishes



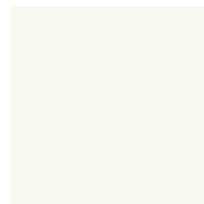
Classic White



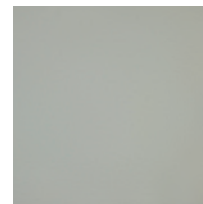
White Chocolate*



Silvergrass*



Bone



Grey Cloud

*Finish option not available on Anderson Half Overlay

NOTE: Adley, Conroe and Anderson cabinet face frames, end panels and accessories come in complementary colors. Customer sign-off is required before orders can be placed; see account manager for details.



Barrett Full Overlay Paint Grade in Dove Grey



Selway Half Overlay Paint Grade in Hurricane



FRAMELESS



Anderson Frameless Thermofused Melamine in Chipmunk

Frameless Construction

- 1 END PANELS**
5/8" thick wood based composite panel with matching laminate exterior surfaces and white laminate interiors.
- 2 TOP/BOTTOM PANELS**
5/8" thick wood based composite panel with matching laminate exterior surfaces and white laminate interiors.
- 3 BACK PANEL**
1/8" (3mm) thick captured back panel. Interior surfaces match case interior.
- 4 SHELVES**
Nominal 3/4" (18mm) thick wood based composite panel with white laminate on both faces and matching edge band on front edge. Shelves are adjustable in all standard cabinets.
- 5 TOE KICK**
5/8" thick x 4-1/2" high wood based composite panel captured between end panels and recessed 4".
- 6 CROSS SUPPORT STRETCHERS**
5/8" thick x 4-1/2" deep wood based composite panel cross support stretchers running the width of the cabinet.
- 7 DRAWERS & DRAWER GUIDES**
Integrated drawer slide & drawer side with white baked-on epoxy finish. Self-closing feature with 60mm closing range. Load capacity of 100 lbs. Sides are 1/16" thick metal. Drawer bottoms and backs are 5/8" (15mm) thick wood based composite panel faced with white laminate. *Optional upgrade available.*
- 8 HINGES**
Fully concealed, 110 degree, 6-way adjustable hinges. *Optional upgrade available.*



Frameless Door Styles

Paint Grade Door Styles

Arbor Creek painted door styles add a classic touch to modern designs. Whether flat panel or slab, achieve chic sophistication in any project.

All 5-piece doors feature 3/4" thick door frames and drawer fronts and 5-piece mortise and tenon joinery. Unless otherwise noted, the primary material for slab doors and 5-piece painted doors will be HDF.



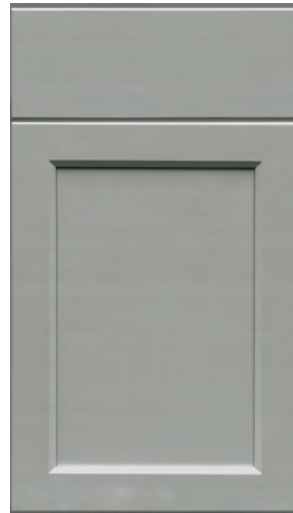
Briar Creek

- Flat panel door with 2-3/4" rails and stiles
- Slab or 5-piece drawer fronts



Hammond

- Shaker door with 3" rails and stiles
- Slab or 5-piece drawer fronts



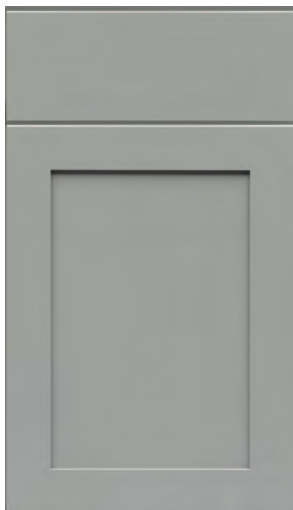
Holston

- Flat panel door with 2-1/4" rails and stiles
- Slab drawer fronts



Laurel

- 5/8" thick doors and fronts
- Slab drawer fronts



Robinson

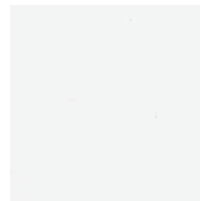
- Shaker door with 2-1/4" rails and stiles
- Slab or 5-piece drawer fronts
- Hardwood rails and stiles; MDF center panel



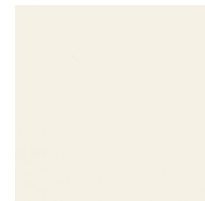
Selway

- Flat panel door with 2-1/4" rails and stiles
- Slab drawer fronts
- Painted doors use hardwood material
- Hardwood rails and stiles; center panel may be MDF or veneer

Paint Finishes



Alpine White



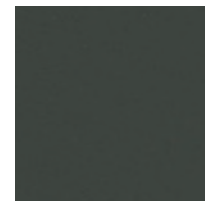
Linen



Dove Grey



Baltic



Hurricane

Frameless Door Styles

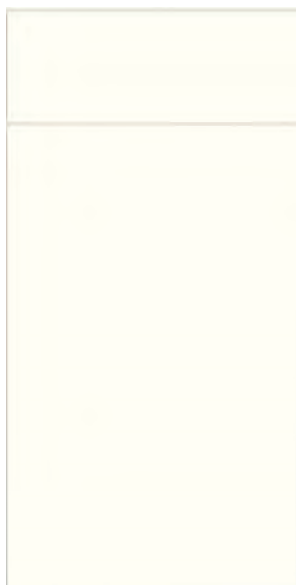
Thermofoil Laminate & Thermofused Melamine Door Styles

Create sleek contemporary looks with Arbor Creek thermofoil laminate and thermofused melamine door styles.



Adley

- 3/4" thick doors and fronts
- Routed shaker style with 2" rails and stiles
- Slab drawer fronts
- Doors are backed with white low pressure melamine



Conroe

- 3/4" thick doors and fronts
- Slab door
- Slab drawer fronts
- Doors are backed with white low pressure melamine



Anderson

- 5/8" thick doors and fronts
- Thermofused melamine on front and back sides of doors
- Slab drawer fronts



Conroe Frameless Thermofoil Laminate
in Beach Day and Hurricane

Frameless Door Styles

Thermofoil Laminate Finishes



Diva



Parchment



Beach Day



Grey Cashmere



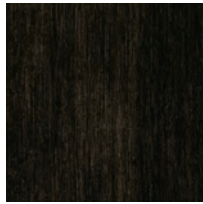
Local Honey



Wheated Bourbon



Somber Grey



Coconut Husk



Starlight White



Exotic White



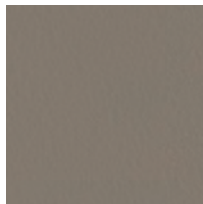
Fashion Grey



Shiitake



Grey Cloud



Stone



Veridian



Hurricane



Charcoal

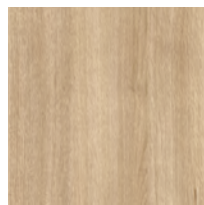
Thermofused Melamine Finishes



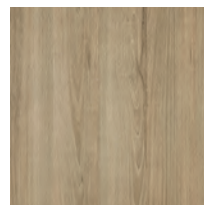
White Chocolate



Natural Elm



Flaxen



Grey Cashmere



Farmhouse



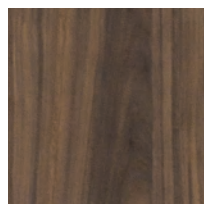
Richmond Cherry



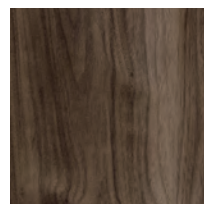
Filbert



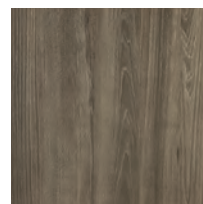
Chipmunk



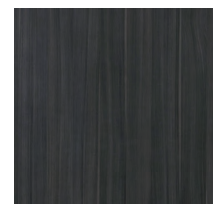
Stag



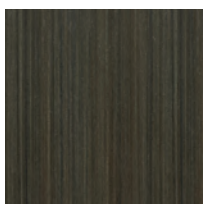
Nut



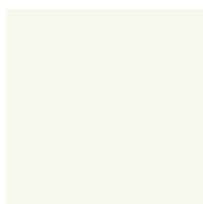
Somber Grey



Graphite



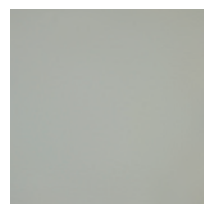
Winter Bark



Bone



Fashion Grey



Grey Cloud

ARBOR | CREEK®

C A B I N E T R Y



Holston Frameless Paint Grade in Alpine White

WWW.ARBORCREEKCABINETS.COM

Actual colors may vary slightly due to variations in screen color. For full color accuracy, please view a sample. Material dimensions listed may vary slightly from actual dimensions of the product. Construction and assembly methods may vary from what is shown in samples and imagery, but do not affect performance standards of products.



A Cabinetworks Group brand

Arbor Creek Cabinetry products are compliant with ANSI A161.1 - 2022 Performance and Construction Standard for Kitchen and Vanity Cabinets.

